

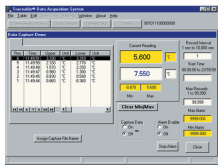
# Traceable® Pressure/Vacuum Gauges



Displays answer in eight different units. Meter is accurate to 1% full-scale plus 1 digit. Jumbo-size digits are 3/8-inch-high. Serial RS-232 output allows it to be connected to a computer or data logger for monitoring and keeping results. To assure accuracy an individually serial-numbered Traceable® Certificate is provided from our ISO 17025 calibration laboratory accredited by A2LA. It indicates traceability to standards provided by NIST (National Institute of Standards and Technology).

At the touch of a button the unit may be zeroed. Memory key recalls highest and lowest readings. A DATA HOLD button freezes the display to capture readings. Transducer has 1/4-inch NPT male-threaded stainless-steel end. It may be used with all gases and liquids compatible with 316 stainless steel. Cable is 40 inches. Supplied with Traceable® Certificate, transducer sensor, 9-volt alkaline battery, and serial computer output. Size is 7 x 3 x 1 1/2 inches and weight is 9 1/2 ounces.

Cat. No.	3165	3166
psi range (resolution)	-14.7 to 725 (1)	-14.70 to 29.0 (0.02)
bar range (resolution)	-1.0 to 50 (0.05)	-1.000 to 2.000 (0.002)
Meter/H <sub>2</sub> O (resolution)	-10 to 509.5 (0.5)	-10.00 to 20.40 (0.02)
Atmospheres range (resolution)	-1.0 to 49.35 (0.05)	-1.000 to 1.974 (0.002)
mm/Hg range (resolution)	-736 to 37500 (50)	-736 to 1500 (2)
inch/Hg range (resolution)	-29 to 1476 (1)	-29 to 59.05 (0.05)
inch/H <sub>2</sub> O range (resolution)	-394 to 20050 (20)	-394 to 802 (1)
Kg/cm <sup>2</sup> range (resolution)	-1 to 50.95 (0.05)	-1.000 to 2.040 (0.002)



Computer Output

**Cat. No. 4138 Easy-Use™ Accessory Adapter 115 VAC**

**Cat. No. 4136 Data Acquisition System** (complete description on page 12)

**Cat. No. 4325 Data Logger** (complete description on page 17)

# Enviro-Meter™



Enviro-Meter™ provides in a single handheld package an anemometer, humidity meter, light meter, and two thermometers. Lightweight and compact case permits one-handed operation.

Features a HOLD button that captures a reading for ease in recording a result. MAX/MIN button displays highest and lowest reading over any time period. Anemometer displays air velocity ranges: 80 to 5910 feet per minute (resolution 1), 0.4 to 30.0 meters per second (resolution 0.1), 1.4 to 108.0 kilometers per hour (resolution 0.1), 0.9 to 67.0 miles per hour (resolution 0.1), and 0.8 to 58.3 knots (resolution 0.1). Accuracy is: under 20 meters per second ±3% of full scale readings and over 20 meters per second ±4% full scale reading.

Humidity range is 10.0 to 95.0% relative humidity (resolution 0.1%RH). Accuracy is: under 70% ±4%RH and over 70% ±(4% of the reading plus 1.2%RH). Light ranges are 0 to 20,000 lux (resolution 1) and 0 to 2000 foot candles (resolution 1). Accuracy is ±5% of the reading and ±8 digits.

Internal ambient thermometer sensor range is 32.0 to 122° Fahrenheit and 0.0 to 50.0° Celsius (resolution 0.1°). Accuracy is ±1.2° C. External thermometer range is -148.0 to 2372° Fahrenheit and -100.0 to 1300° Celsius (resolution 0.1°). Accuracy is ±(1% of the reading plus 1°C). Comes ready to use with fast-response, type K beaded external thermometer probe with cable length of 4 feet, wrist strap, and 9-volt battery. Size is 6 1/2 x 2 1/4 x 1 1/4 inches and weight is 6 ounces.

**Cat. No. 4332 Enviro-Meter™**